

A hand holding a glowing blue globe with a city skyline and a grid pattern in the background. The globe is held in the lower-left foreground, with a city skyline visible in the background. The background is a blue gradient with a grid pattern and a city skyline. The text "CENTRAL EXPRESS INT'L CO., LTD." is written in white, bold, sans-serif font across the middle of the image.

CENTRAL EXPRESS INT'L CO., LTD.

GO BEYOND LOGISTICS



## 1. OUR COMMITMENT

No matter how large your organization, or the size of your shipment, we provide the best trained staff, the most innovative technology, and the greatest breadth of transportation options.

What this equates to is our commitment to provide superior service, whatever you needs. And, thanks to the longstanding relationship that we share with our network of qualified carriers, we are committed to providing our customers with the most competitive rates, and overall consistent value in the transportation and logistics marketplace.

As a member of KIFFA(Korea International Freight Forwarders Association), we have pledged to abide by their professional code of conduct, meaning we guarantee to have properly trained, certified, and experienced freight forwarding professionals on our team to help guide your overseas shipments.

Lastly, Central Express Int'l Co., Ltd. is committed to providing each of our clients with 100% confidence and security.



## 2. BUSINESS VISION & CORE VALUES

**Our business vision is surely to be “ a logistics value creator”.**  
**From the very beginning, we are acting as a global logistics leader by expanding domestic & overseas business.**

### **Our core values**

- \* Accuracy – dealing with fair & honest management to fulfill our duties & responsibilities**
- \* Safety – handling customers’ valuable cargoes with care**
- \* Creativeness – think higher and act innovative**

### 3. CORPORATE HISTORY

**We are poised to leap the global leader in the forwarding marketplace**



1991 ~

- 1991.10 Established Central Express Int'l Co., Ltd.
- 1994.03 Registered multi-modal transportation business to ministry of transportation with No. 460
- 1999.10 Opened Busan Branch



2000s ~

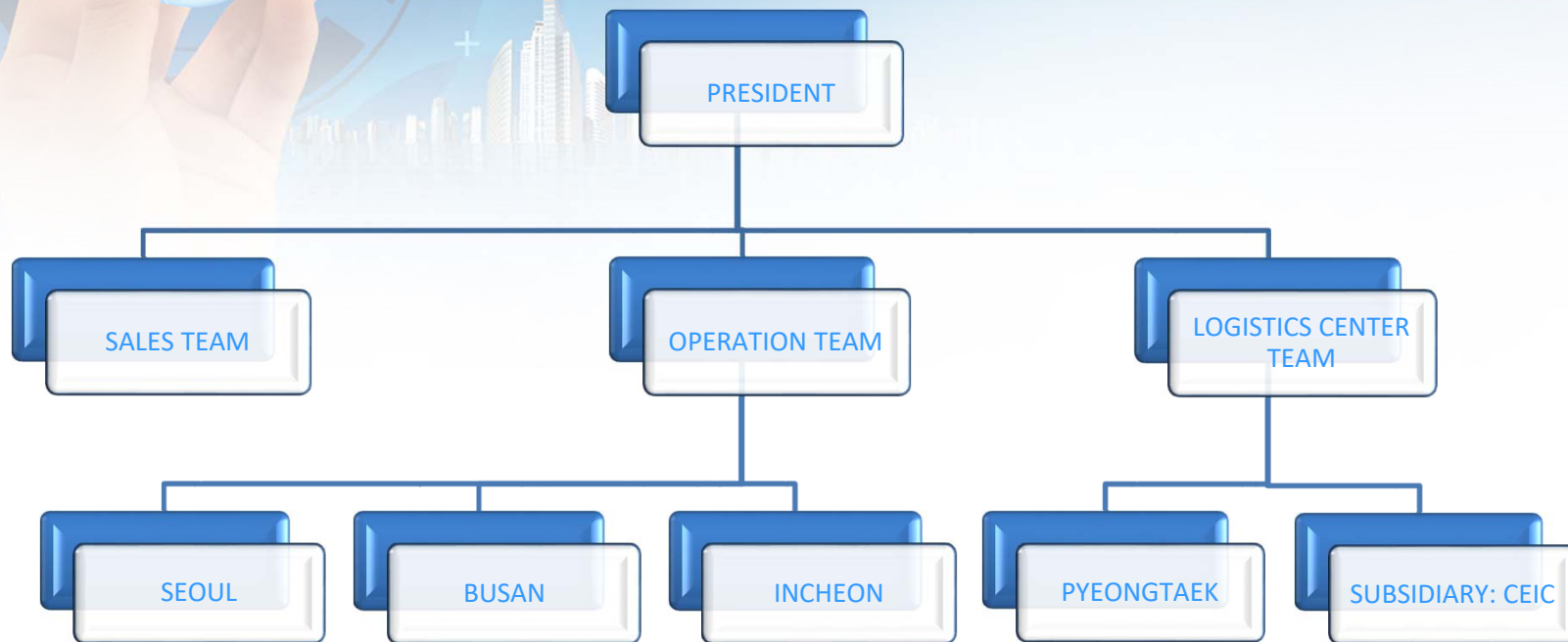
- 2001.06 Opened Incheon Airport Branch
- 2006.10 Expanded the head-office in Seoul
- 2008.07 Established 1<sup>st</sup> Pyeongtaek Bonded Logistics Centre



2010s ~

- 2012.05 AEO Certificate Acquirement from Korean Customs Service( No. KRAEO3612040)
- 2013.03 Built the Head-Office
- 2016.09 2<sup>nd</sup> Pyeongtaek Bonded Logistics Centre with establishing our subsidiary: CEIC

## 4. ORGANIZATION



## 5. FACILITIES & EQUIPMENT

### \* FACILITIES

BRANCH	FUNCTIONS	TYPE	VOLUME
HEAD-OFFICE IN SEOUL	ADMINISTRATION, SALES, IN & OUT OPERATION	CONTAINER	20HQ X 46UNITS
INCHEON AIRPORT OFFICE	IN & OUT OPERATION	TRUCK(OWN & CHARTERED)	1TON TRUCK X 10 UNITS 2.5TON TRUCK X 5 UNITS 5TON TRUCK X 7 UNITS
BUSAN OFFICE	IN & OUT OPERATION		
PYEONGTAEK LOGISTICS CENTRE	TOTAL WAREHOUSING SERVICE	FOLKLIFT(PYEONGTAEK)	4UNITS

\* CEIC, OUR SUBSIDIARY COMPANY, IS FOCUSED ON 3<sup>rd</sup> PARTY LOGISTICS



## 6. STRONG POINTS

- A. WELL ORGANIZED TEAMS
- B. SKILLED AND EXPERIENCED MANPOWER
- C. SOUND FINANCIAL STATUS ( 0% DEBT RATIO IN 2019)
- D. GOOD REPUTATION IN THE MARKET
- E. SPECIALIZED TO ARRANGE “ PERISHABLE PRODUCTS WITH REEFER CONTAINER & PROJECT CARGO”
- F. COMPETITIVE S/C WITH CARRIERS



# THANK YOU!

Copyright©2021 by Central Express Int'l Co., Ltd All Right Reserved.

